



○ SP300
POSITIONERS

SP300 Positioners

The smart, flexible option

ABOUT THE SP300

The SP300 range of communicating positioners is the smart and flexible option for today's modern processing environments. They use a non-contact Hall Effect sensor, which detects changes in magnetic flux when the control valve stem moves, and then feeds it back to the positioner so that it may alter the air signal to the actuator. This ensures that the valve is operating in the correct position and solves many user problems.

THE SP300 SOLVES MANY USER PROBLEMS

Solving Problems of Environment and Access

Control valves are often located in an environment that makes it challenging to install, maintain and/or control the process. It may be difficult to gain access to the control valve, or extremes of temperature might make maintenance an unpleasant job. These problems mean that the control valve can become neglected, leading to sudden breakdowns and loss of production.

Remote access to the control parameters within a positioner can be achieved through communication protocols like HART, Profibus or Fieldbus Foundation. But some plants do not use this technology, and in any case, access to the positioner is still needed for maintenance.

The SP300 solves the problem of difficult access through the use of the Hall Effect sensor. This has no mechanical linkage to the valve stem and so can be mounted directly to the valve or at a more convenient location of up to 65 feet away.



Solving Problems of Vibration

You may also have experienced problems with process instability because vibrations from the plant have a detrimental effect on the positioner, and therefore the performance of the control valve.

The SP300 also solves the problems of vibrating plant through the Hall Effect sensor. As it has no mechanical linkage to the valve stem, it is unaffected by vibration.

Solving Problems of Corrosion

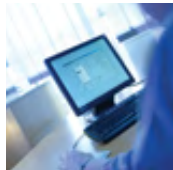
Corrosion of the positioner enclosure is another common problem faced by industry, especially in atmospheres containing corrosive substances such as salts and chemicals, or environments that require regular hosing down.

Stainless steel enclosures are now an affordable option. High investment has traditionally been required for a positioner with a stainless steel enclosure. Now Spirax Sarco's integrated manufacturing and global purchasing have made stainless steel enclosures a cost-effective, long-term solution to corrosion problems caused by salts, chemicals and cleaning practices.

THE RANGE AT A GLANCE

SP300 model	Communications protocol	Intrinsically safe	Explosion proof	Weather-proof enclosure
SP301	4-20mA + HART	EEx ia IIC T6	EEx d IIC T6 / ATEX	IP67 and NEMA 4X
SP302	Foundation Fieldbus			
SP303	Profibus PA			

SUMMARY OF KEY FEATURES AND BENEFITS



Key features

All communications protocols

Key reasons

Compatible with HART, Profibus PA and Fieldbus Foundation.

Key benefits

You can connect to all existing network systems as well as those in the future.



All operating environments

(intrinsically safe, explosion proof, heavy vibration, extreme temperatures, high corrosion atmospheres and difficult access)

Weatherproof, intrinsically safe and explosion proof compatibility, with stainless steel enclosure option for corrosive areas.

The SP300 is suitable for any operating locations and conditions.

Non-contact 'Hall Effect' sensor, with remote option to 65 ft. distance.



Compatible with all pneumatic actuator types

NAMUR standard actuator mounting. Operation compatible with all rotary, linear, single acting and double acting pneumatic actuators.

The SP300 can be fitted to new and existing control valves, which means you can standardise on the SP300 for all your control valves.



Quick and easy commissioning

Self-configured in a few minutes, adjustment of parameters through local display means no special tools are required.

Your engineers quickly understand the operation of the SP300 and spend little time setting parameters.

Remote operation through communication protocols.



Part of a total controls solution from Spirax Sarco

One of many controls and instrumentation products that may be acquired separately or as a complete one-stop-shop controls solution.

Peace of mind that your purchases are supported wherever you are in the world and that one single contact will fulfil your controls requirements, from design to after sales service.



VALVE AND ACTUATOR PLUS POSITIONER



SP300 WITH REMOTE HALL EFFECT SENSOR