

SP200

electropneumatic smart positioner



spirax
/sarco

SP200

The new generation of non-contact smart positioners

SP200 positioner – smart, simple, low cost

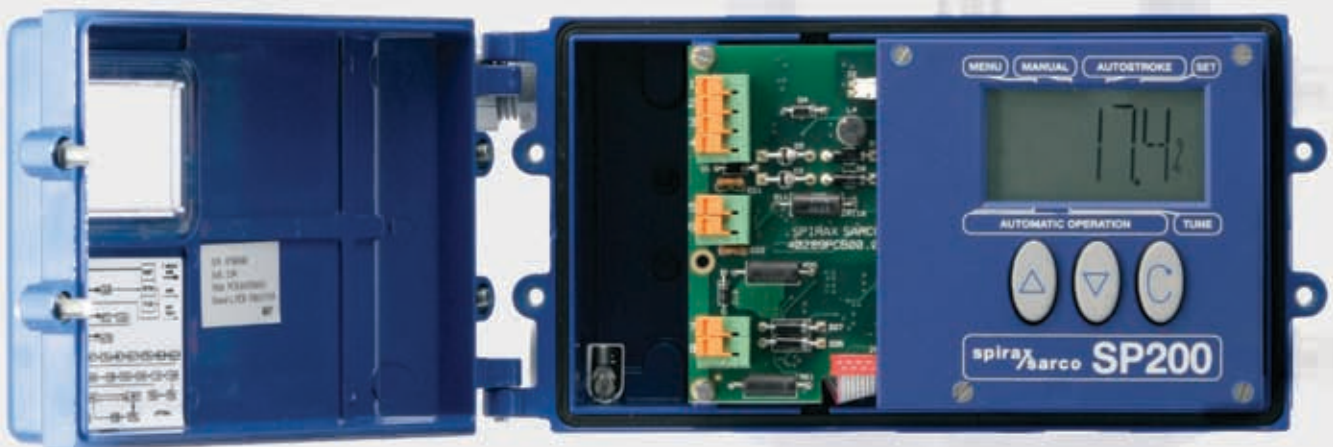
The precise control of valve position is essential for the accurate and efficient control of industrial processes. Valve positioners provide the electropneumatic interface, guaranteeing fast and accurate control by eliminating hysteresis and the effects of differential pressure whilst optimising actuator selection.

Smart

The Spirax Sarco SP200 positioner is enhanced by the ability to customise the control action, set travel limits and monitor valve position. The embedded menu driven program, accessed via the integrated keypad, eliminates the need for additional or remote software. Data logging of valve performance will assist maintenance diagnostics whilst adaptive action helps to compensate for changes in supply air pressure and stem friction. Having travel switches and a 4-20 mA retransmission as standard it is easy to monitor the valve in operation.

Simple

All SP200 units are supplied with standard mounting kit conforming to IEC60534-6-1 for lined actuators or VDI/VDE 3845 for rotary actuators making them quick and easy to assemble. They operate on a non-mechanical magnetic feedback system which is very easy to set-up and will not suffer wear, vibration or dirt problems. A simple autostroke routine makes it extremely quick and easy to commission and the keypad provides trouble free navigation through the menu system. Manual operation is available at the touch of a button.



Low cost of ownership

Digital technology, which is also used to control instrument air usage, makes the SP200 very energy efficient. Additionally, there are very few mechanical elements significantly reducing the effects of wear contributing to guaranteed long-term reliability and reduced lifecycle costs.

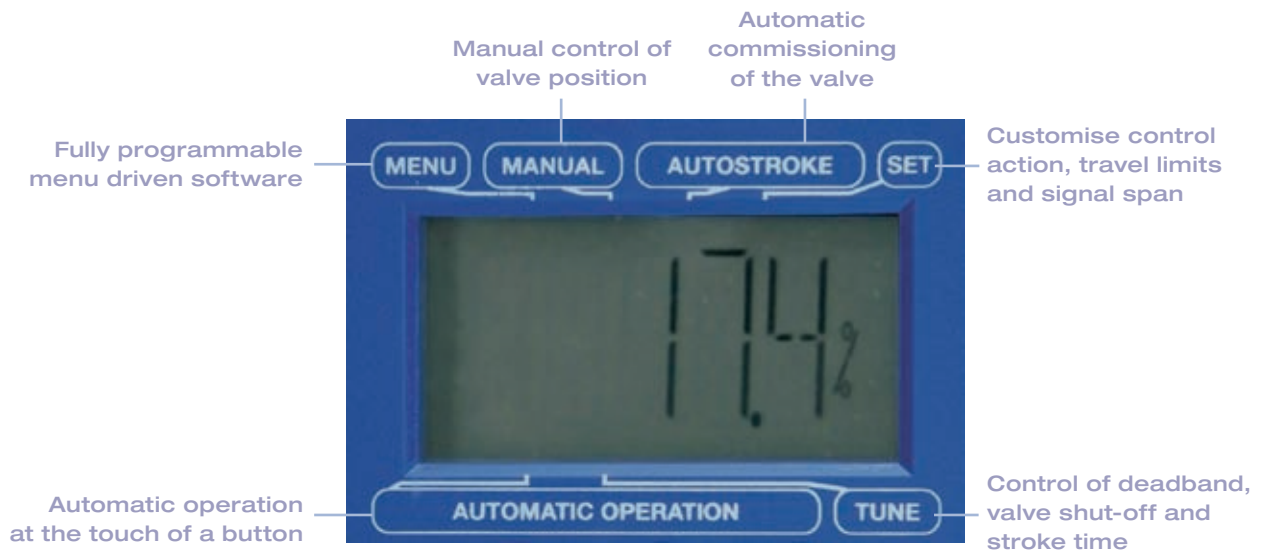
Proven technology

The SP200 loop powered smart positioner is a development of the very successful SP2 model, which is widely acknowledged to have set the industry standard for being one of the easiest positioners to commission.

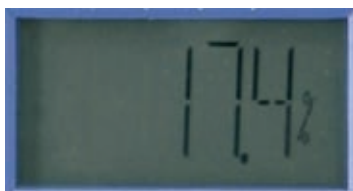
Key features and benefits:

- User friendly features of the SP200 include:
 - Autostroke routine that makes the positioner a breeze to set-up.
 - Easy customisation of performance through menu driven embedded software.
 - Digital air control to minimise running costs.
 - Adaptive action to compensate for process variations.
 - Continuous data logging of valve performance.
- Utilises a non-contact hall effect magnetic feedback linkage. This detects changes in magnetic flux when the control stem moves, then feeds it back to the positioner so that it can regulate the air signal to the actuator. This is a major improvement over mechanical linkages that can quickly wear, especially in dirty environment, causing poor control and executed failure.
- Large, easy to read digital display and enhanced reliability due to the elimination of most mechanical elements.
- Travel switches and 4 – 20 mA retransmission as standard.

The SP200 digital display



Digital indication of % travel



On screen commissioning aids include input signal, software travel switch status and valve diagnostics



Embedded menu driven programmable software



The SP200 range

Product ²	Input signal range	Stroke range	Characteristic ¹	Travel switch and 4 - 20 mA retransmission feature	Enclosure rating	Mounting Kit for linear actuators	Gauge block with two 0 to 100 psig gauges
SP200 Linear Positioner	4 - 20 mA	10 to 100 mm	Equal %, fast opening, linear	Included	IP65 (similar to NEMA4X)	IEC60534-6-1 specification mounting kit	Optional
SP200 Rotary Positioner	4 - 20 mA	5 to 120°	Equal %, fast opening, linear	Included	IP65 (similar to NEMA4X)	VDI/VDE 3845 specification mounting kit for rotary actuators	Optional

Note: ¹Output to signal relationship; ² Please see technical information sheet TI-P343-28-US for full product nomenclature designation.

Electropneumatic smart positioner



Electropneumatic smart positioner with gauges



Key features and benefits

	Key feature	Key reason	Key benefit
	Quick and simple to commission	Autostroke commissioning feature	Reduces time and cost
	Significant reduction in time and complexity to install. Unaffected by vibration, dirt or susceptible to wear.	Hall effect magnetic valve position sensing, no mechanical feedback linkage	Reduces time and cost to commission, improved reliability and accuracy
	Energy efficient	Digital air control, near zero air consumption at controlled position	Low running costs
	Programmable functions via integral keypad	Easy and quick to commission, easy optimization of valve performance	Control application optimized to application requirement
	Easy local monitoring of valve/actuator/positioner	Large digital display and on screen commissioning which includes valve position, travel switch mode, input signal status and diagnostics	Enhanced process control information for the user
	Even more features as standard	Travel switches and 4 – 20 mA retransmission features included as standard	Simpler selection, greater flexibility, better value for money
	Easy monitoring of air signals allows easy set up and diagnostics	Manifold and gauges available	Quick to commission, easy to monitor air supply
	One model suits most positioner applications	Compatible with many pneumatic actuator types	Commonality of equipment, reduced supplier base
	Part of a total control solution from Spirax Sarco	One of many controls and implementation solutions which may be acquired separately or as a complete one-stop-shop controls solution	Peace of mind that your purchases are supported wherever you are in the world and that one single contact will fulfil your controls requirements from design to after sales service

Regional sales offices

Northeast

Spirax Sarco, Inc.
7760 Olentangy River Road
Suite 120
Columbus, OH 43235
Phone: (614) 436-8055
Fax: (614) 436-8478

Mid Atlantic

Spirax Sarco, Inc.
4647 Saucon Creek Road
Suite 102
Center Valley, PA 18034
Phone: (800) 251-7676
Fax: (800) 996-3232

Midwest

Spirax Sarco, Inc.
1500 Eisenhower Lane
Suite 600
Lisle, IL 60532
Phone: (630) 493-4525
Fax: (630) 724-9176

Southeast

Spirax Sarco, Inc.
115 Atrium Way
Suite 118
Columbia, SC 29223
Phone: (800) 883-4411
Fax: (803) 865-0459

Southwest

Spirax Sarco, Inc.
203 Georgia Avenue
Deer Park, TX 77536
Phone: (281) 478-4002
Fax: (281) 478-4615

West

Spirax Sarco, Inc.
1820 W. Orangewood
Suite 207
Orange, CA 92868
Phone: (800) 883-4411
Fax: (714) 940-0183



Some products, services or solutions may not be available in certain markets

SPIRAX SARCO, INC.
1150 Northpoint Blvd.
Blythewood, SC 29016
t: 800.883.4411
or: 803.714.2000
f: 803.714.2222
www.spiraxsarco.com/us

spirax
/sarco