



FLOW METERING EQUIPMENT

# ***BIN Round***

## ***Pitot Tube Flow Meter***

### ***2" to 24"***

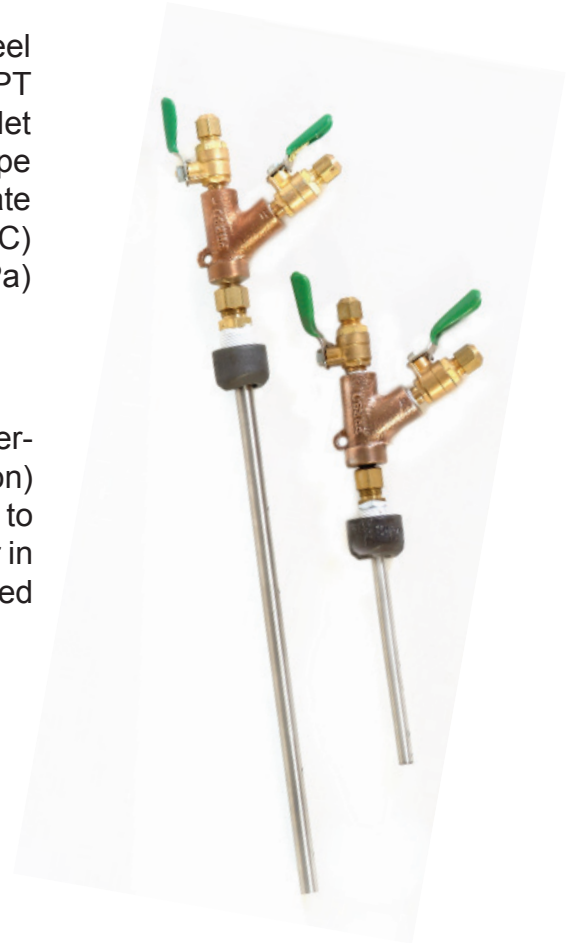
Probe Construction	316 Stainless steel
Head	"Y" type, brass 1/8" FNPT
Pipe Mounting	3000# CS thread-o-let
Instrument Valves	1/4" SAE flare brass ball type
ID Tag	Polycarbonate
Temperature Maximum *	250 °F (120 °C)
Pressure Maximum *	400 PSIG (2760 kPa)

\* For higher pressure and temperature applications please consult factory

The BIN is a highly reliable averaging pitot tube which generates a pressure differential between its upstream (stagnation) ports and its downstream (static) ports that is proportional to the flow rate squared. It can be used to measure liquid or air in pipe sizes between 2" and 24". An opposite support is supplied standard on pipe sizes 8" and larger.

### ***Features***

- Accuracy ±3%
- Easy low-cost installation - ideal for retrofits
- Very low pressure drop
- Bi-directional flow measurement capability



## ***MODEL SELECTOR:***

# **PBIN**□□□□□

### PIPE SIZE

- A - 2"
- B - 2-1/2"
- C - 3"
- D - 3-1/2"
- E - 4"
- F - 5"
- G - 6"
- H - 8"
- I - 10"
- J - 12"
- K - 14"
- L - 16"
- M - 18"
- N - 20"
- O - 24"

### SCHEDULE

- A - STD
- B - 40
- C - 80
- D - TYPE L (COPPER)
- E - TYPE K (COPPER)
- X - OTHER

### PIPE MOUNTING/CONNECTOR

- HARDWARE
- 1 - CARBON STEEL/BRASS
  - 2 - COPPER/BRASS
  - 3 - PVC/BRASS
  - X - OTHER

### INSTRUMENT

- CONNECTION
- A - BRASS BALL VALVE  
1/4" SAE
  - B - BRASS BALL VALVE  
w/QUICK CONNECT
  - X - OTHER

### TAG \*

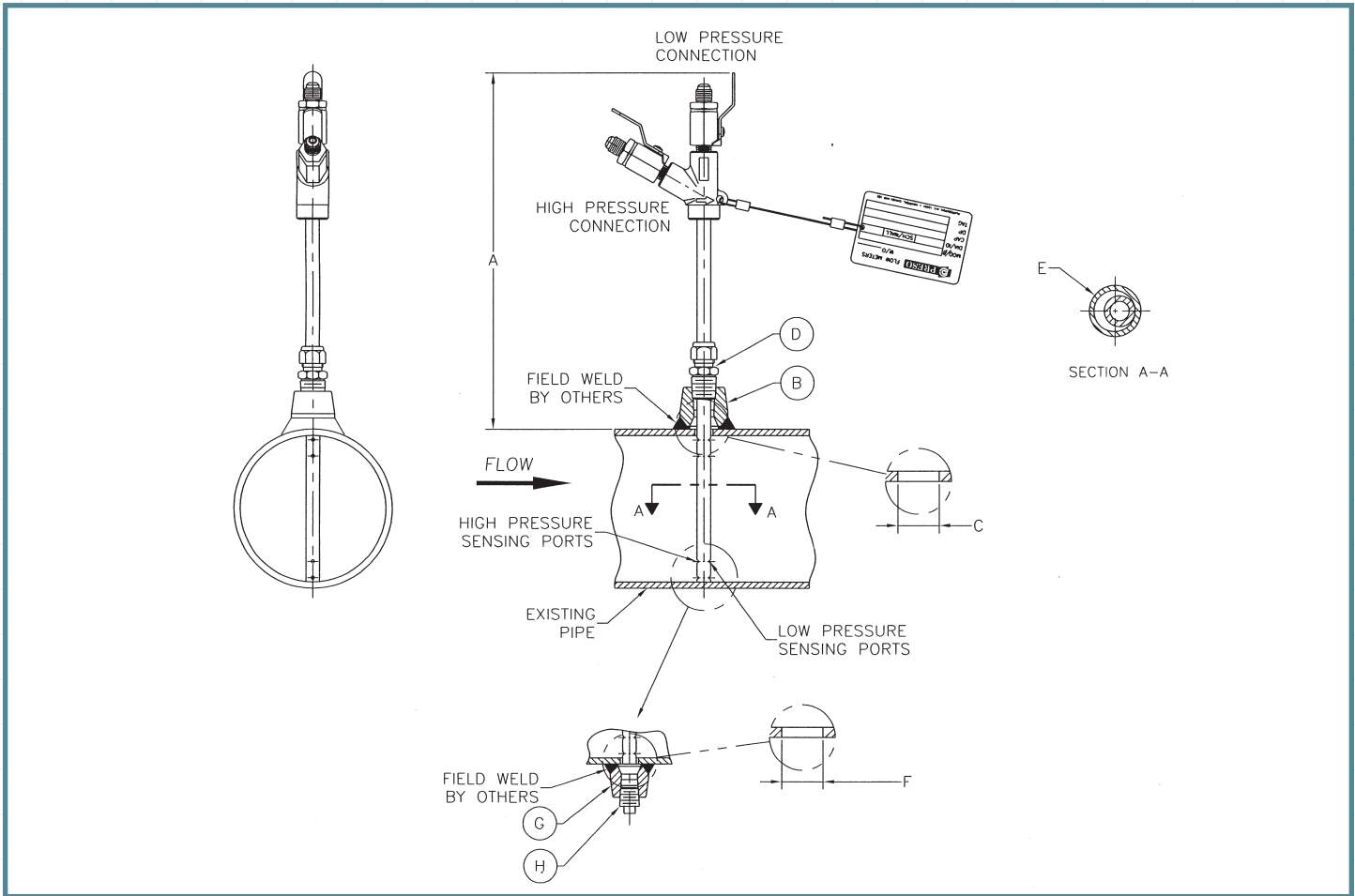
- 1 - POLYCARBONATE
- 2 - STAINLESS STEEL

**BOLD** = Standard

\* Tag information must be included with order.

# SPECIFICATIONS AND SUBMITTAL DATA

SIZE	MODEL	A HEIGHT inch (mm)	B inch (mm)	C DIM inch (mm)	D OD inch (mm)	E NPT inch (mm)	F NPT inch (mm)	APP. WEIGHT lbs (kg)
2"	PBINAXXX	8.25 (209.55)	0.25 (6.35)	0.625 (15.80)	0.3125 (7.9)	N/A	N/A	1 (0.45)
2-1/2"	PBINBXXX	8.25 (209.55)	0.25 (6.35)	0.625 (15.80)	0.3125 (7.9)	N/A	N/A	1 (0.45)
3"	PBINCXXX	8 (203.2)	0.25 (6.35)	0.625 (15.80)	0.3125 (7.9)	N/A	N/A	1 (0.45)
3-1/2"	PBINDXXX	8.25 (209.55)	0.25 (6.35)	0.625 (15.80)	0.3125 (7.9)	N/A	N/A	1 (0.45)
4"	PBINEXXX	8.25 (209.55)	0.25 (6.35)	0.625 (15.80)	0.3125 (7.9)	N/A	N/A	1 (0.45)
5"	PBINFXXX	8.75 (222.25)	0.375 (9.5)	0.625 (15.80)	0.375 (9.5)	N/A	N/A	1.25 (0.57)
6"	PBINGXXX	8.75 (222.25)	0.375 (9.5)	1.125 (28.5)	0.375 (9.5)	N/A	N/A	1.25 (0.57)
8"	PBINHXXX	8.38 (212.9)	0.375 (9.5)	1.125 (28.5)	0.375 (9.5)	0.25 (6.35)	0.25 (6.35)	1.5 (0.68)
10"	PBINIXXX	8.38 (212.9)	0.375 (9.5)	1.125 (28.5)	0.375 (9.5)	0.25 (6.35)	0.25 (6.35)	1.5 (0.68)
12"	PBINJXXX	9.38 (238.3)	0.5 (12.7)	1.125 (28.5)	0.5 (12.7)	0.375 (9.5)	0.375 (9.5)	2 (0.91)
14"	PBINKXXX	10.25 (260.35)	1 (25.4)	1.375 (34.9)	1 (25.4)	1 (25.4)	1 (25.4)	4.25 (1.93)
16"	PBINLXXX	10.38 (263.65)	1 (25.4)	1.375 (34.9)	1 (25.4)	1 (25.4)	1 (25.4)	4.25 (1.93)
18"	PBINMXXX	10.38 (263.65)	1 (25.4)	1.375 (34.9)	1 (25.4)	1 (25.4)	1 (25.4)	4.5 (2.05)
20"	PBINNXXX	10.25 (260.35)	1 (25.4)	1.375 (34.9)	1 (25.4)	1 (25.4)	1 (25.4)	4.5 (2.05)
24"	PBINOXXX	10.25 (260.35)	1 (25.4)	1.375 (34.9)	1 (25.4)	1 (25.4)	1 (25.4)	4.5 (2.05)



8635 Washington Avenue  
 Racine, WI 53406-3738 USA  
 www.preso.com

Tel: 800-632-7337 or 262-639-6770  
 Fax: 262-417-1148  
 E-mail: info@preso.com