



FLOW METERING EQUIPMENT

BHR Ellipse®

Pitot Tube Flow Meter

2" to 24"



Probe Construction	316 Stainless steel
Head	"Y" type, brass 1/8" FNPT
Instrument Valves	1/4" SAE flare brass ball type
Retract Assembly	Wet tap
ID Tag	Polycarbonate
Temperature Maximum *	120 °F (49 °C)
Pressure Maximum *	75 PSIG (517 kPa)

BHR 2" - 5"	ELLIPSE (1/2")
Sensor Connection	3/4" Brass compression w/SS ferrule
Pipe Mounting	3/4" 3000# CS thread-o-let
Isolating Valve	3/4" Bronze ball valve

BHR 6" - 12"	ELLIPSE (7/8")
Sensor Connection	1" Brass compression w/SS ferrule
Pipe Mounting	1-1/4" 3000# CS thread-o-let
Isolating Valve	1-1/4" Bronze ball valve

BHR 14" - 24"	ELLIPSE (1-1/4")
Sensor Connection	1-1/4" Brass compression w/SS ferrule
Pipe Mounting	1-1/2" 3000# CS thread-o-let
Isolating Valve	1-1/2" Bronze ball valve

* For higher pressure and temperature applications please consult factory

Features

- No separation effects on the low (static) pressure
- Turndown ratio of 17:1
- No vacuum effects
- No vortex generation
- Very high repeatability
- Accuracy of ±3/4% uncalibrated
- Lowest drag coefficient (lowest pressure loss in the industry)

MODEL SELECTOR: PBHR□□□□□

PIPE SIZE

- A - 2"
- B - 2-1/2"
- C - 3"
- D - 3-1/2"
- E - 4"
- F - 5"
- G - 6"
- H - 8"
- I - 10"
- J - 12"
- K - 14"
- L - 16"
- M - 18"
- N - 20"
- O - 24"

SCHEDULE

- A - STD
- B - 40
- C - 80
- D - TYPE L (COPPER)
- E - TYPE K (COPPER)
- X - OTHER

BOLD = Standard

PIPE MOUNTING/CONNECTOR

HARDWARE

- 1 - CARBON STEEL/BRASS
- 2 - COPPER/BRASS
- 3 - PVC/BRASS
- 4 - CARBON STEEL w/DOUBLE SUPPORT
- 5 - COPPER w/DOUBLE SUPPORT
- 6 - PVC w/DOUBLE SUPPORT
- X - OTHER

INSTRUMENT CONNECTION

- A - BRASS BALL VALVE 1/4" SAE
- B - BRASS BALL VALVE w/QUICK CONNECT
- X - OTHER

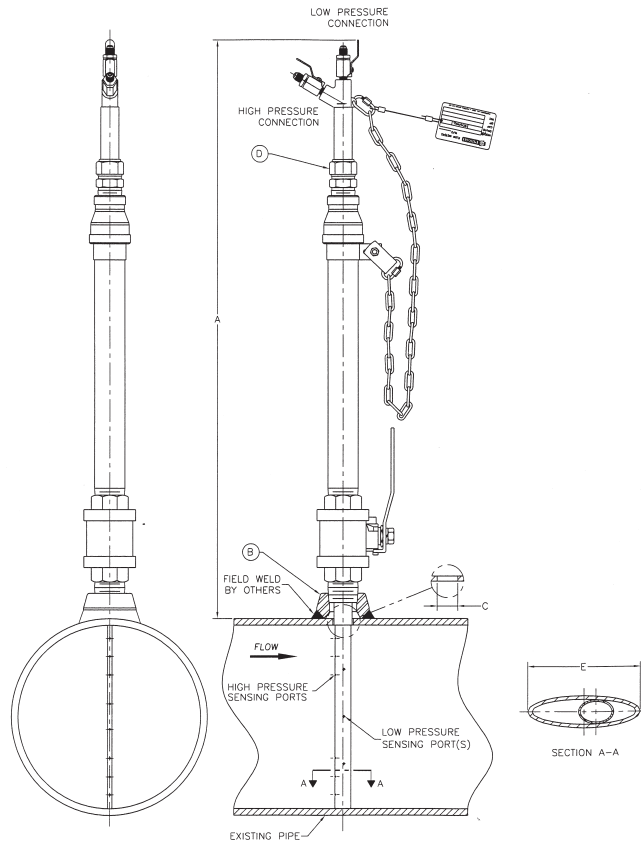
TAG *

- 1 - POLYCARBONATE
- 2 - STAINLESS STEEL

* Tag information must be included with order.

SPECIFICATIONS AND SUBMITTAL DATA

SIZE	MODEL	A HEIGHT inch (mm)	B NPT inch (mm)	C DIA inch (mm)	D DIA inch (mm)	E ELLIPSE inch (mm)
2"	PBHRAXXX	12 (304.8)	0.75 (19)	0.625 (15.8)	0.5 (12.7)	0.5 (12.7)
2-½"	PBHRBXXX	12.5 (317.5)	0.75 (19)	0.625 (15.8)	0.5 (12.7)	0.5 (12.7)
3"	PBHRCXXX	13 (330.2)	0.75 (19)	0.625 (15.8)	0.5 (12.7)	0.5 (12.7)
3-½"	PBHRDXXX	13.5 (342.9)	0.75 (19)	0.625 (15.8)	0.5 (12.7)	0.5 (12.7)
4"	PBHREXXX	14 (355.6)	0.75 (19)	0.625 (15.8)	0.5 (12.7)	0.5 (12.7)
5"	PBHRFXXX	15 (381)	0.75 (19)	0.625 (15.8)	0.5 (12.7)	0.5 (12.7)
6"	PBHRGXXX	23.5 (596.9)	1.25 (31.7)	1.125 (28.6)	1.0 (25.4)	0.875 (22.2)
8"	PBHRHXXX	25.5 (647.7)	1.25 (31.7)	1.125 (28.6)	1.0 (25.4)	0.875 (22.2)
10"	PBHRIXXX	27.375 (695.3)	1.25 (31.7)	1.125 (28.6)	1.0 (25.4)	0.875 (22.2)
12"	PBHRJXXX	27.375 (695.3)	1.25 (31.7)	1.125 (28.6)	1.0 (25.4)	0.875 (22.2)
14"	PBHRKXXX	31.625 (803.3)	1.5 (38.1)	1.375 (34.9)	1.25 (31.7)	1.25 (31.7)
16"	PBHRLXXX	33.625 (854)	1.5 (38.1)	1.375 (34.9)	1.25 (31.7)	1.25 (31.7)
18"	PBHRMXXX	35.625 (904.9)	1.5 (38.1)	1.375 (34.9)	1.25 (31.7)	1.25 (31.7)
20"	PBHRNXXX	37.625 (955.7)	1.5 (38.1)	1.375 (34.9)	1.25 (31.7)	1.25 (31.7)
24"	PBHROXXX	41.625 (1057.3)	1.5 (38.1)	1.375 (34.9)	1.25 (31.7)	1.25 (31.7)



RFI Racine Flow Meter Group

Blancett

DYNASONICS Flo-tech

HEDLAND

PRESO

racine



8635 Washington Avenue
Racine, WI 53406-3738 USA
www.preso.com

Tel: 800-632-7337 or 262-639-6770
Fax: 262-417-1148
E-mail: info@preso.com