



Max Machinery, Inc.

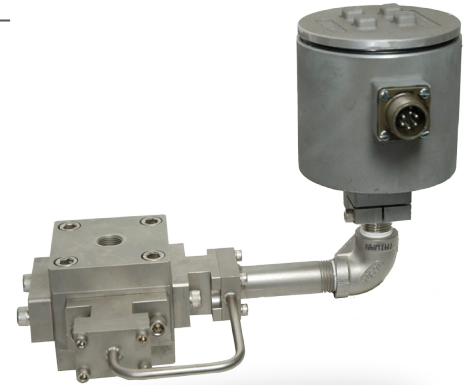
## Model 234 Water Flow Meter 10 to 4000 cc/min

### SPECIFICATIONS

Flow Range (at 1 cP)	10 to 4000 cc/min.
Maximum Operating Pressure	140 bar (2000 psi)
Displacement	10.5 cc/rev
Weight	5.0 kg
Recommended Filtration	10 micron
Port Sizes	3/8" NPT
Fluids	Aqueous and non-lubricating liquids

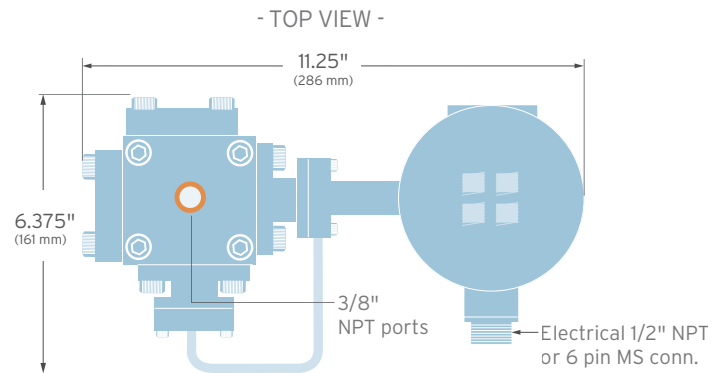
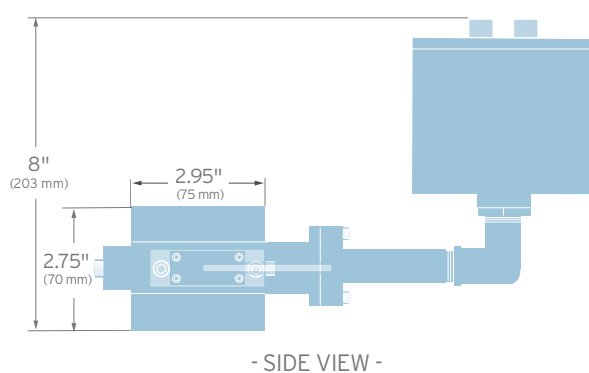
### MATERIALS OF CONSTRUCTION

Body	Stainless steel, type 316
Pistons	Carbon
Bearings	Rulon
O Rings	Teflon®
Certifications	UL®, CSA



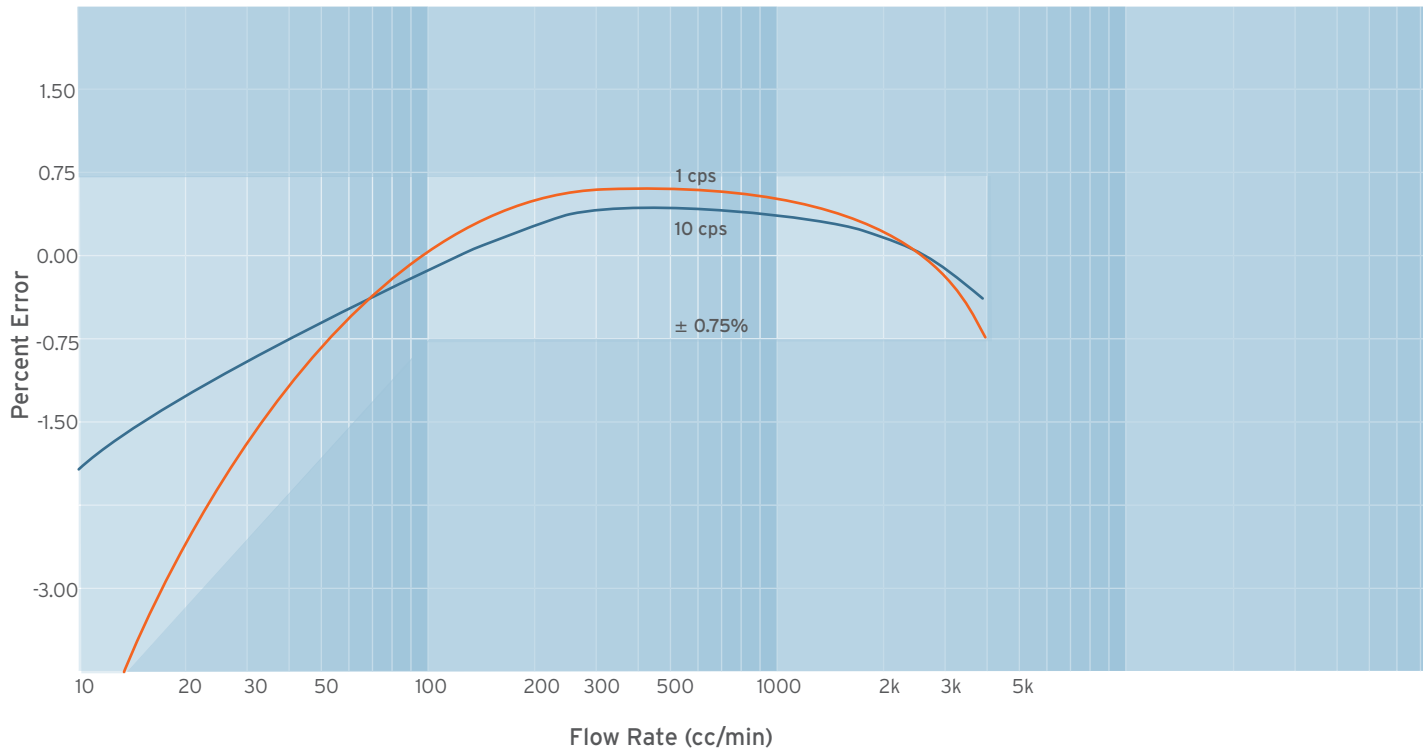
### OUTPUT SIGNAL

Type of Output	Pulse, 5 Vdc standard Equal to supply voltage - optional
Power Supply Requirement	5-30 Vdc @ 15mA and load
Ambient Operating Temp	-18° C to 55° C
Metered Liquid Temperature	5° C to 110° C @ 30° C ambient



# Model 234 Flow Meter

## ACCURACY



## TYPICAL PRESSURE DROP (Delta P versus Flow rate for various viscosities)

