

Model 214 Piston Flow Meter 10 to 10,000 cc/min

SPECIFICATIONS

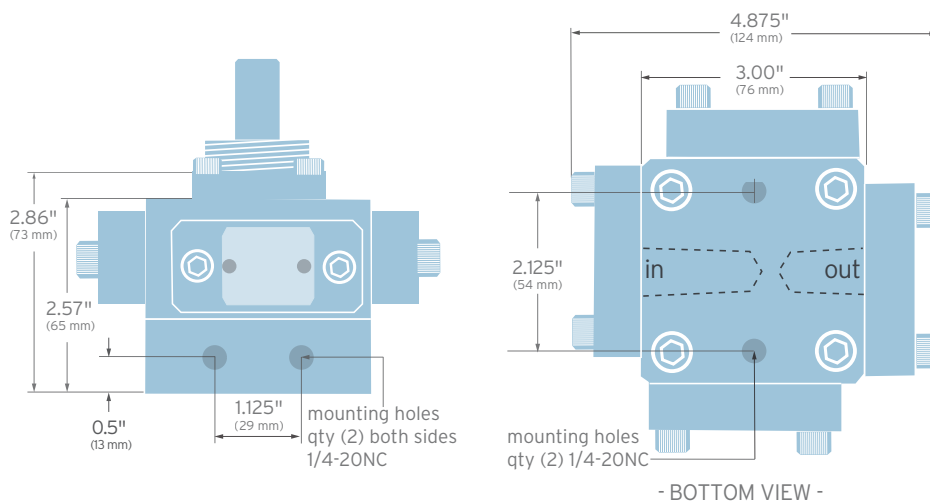
Flow Range (at 3 cP)	10 to 10,000 cc/min.
Maximum Operating Pressure	70 bar or 210 bar (1000 or 3000 psi)
Displacement	10.5 cc/rev
Weight	3.3 kg
Recommended Filtration	10 micron
Port Size(s)	3/8" NPT, #6 SAE or manifold mount
Accuracy	± 0.2% of reading with a linearized transmitter ± 0.5% of reading with a non-linearized transmitter
Fluids	Most non aqueous, organic liquids



MATERIALS OF CONSTRUCTION

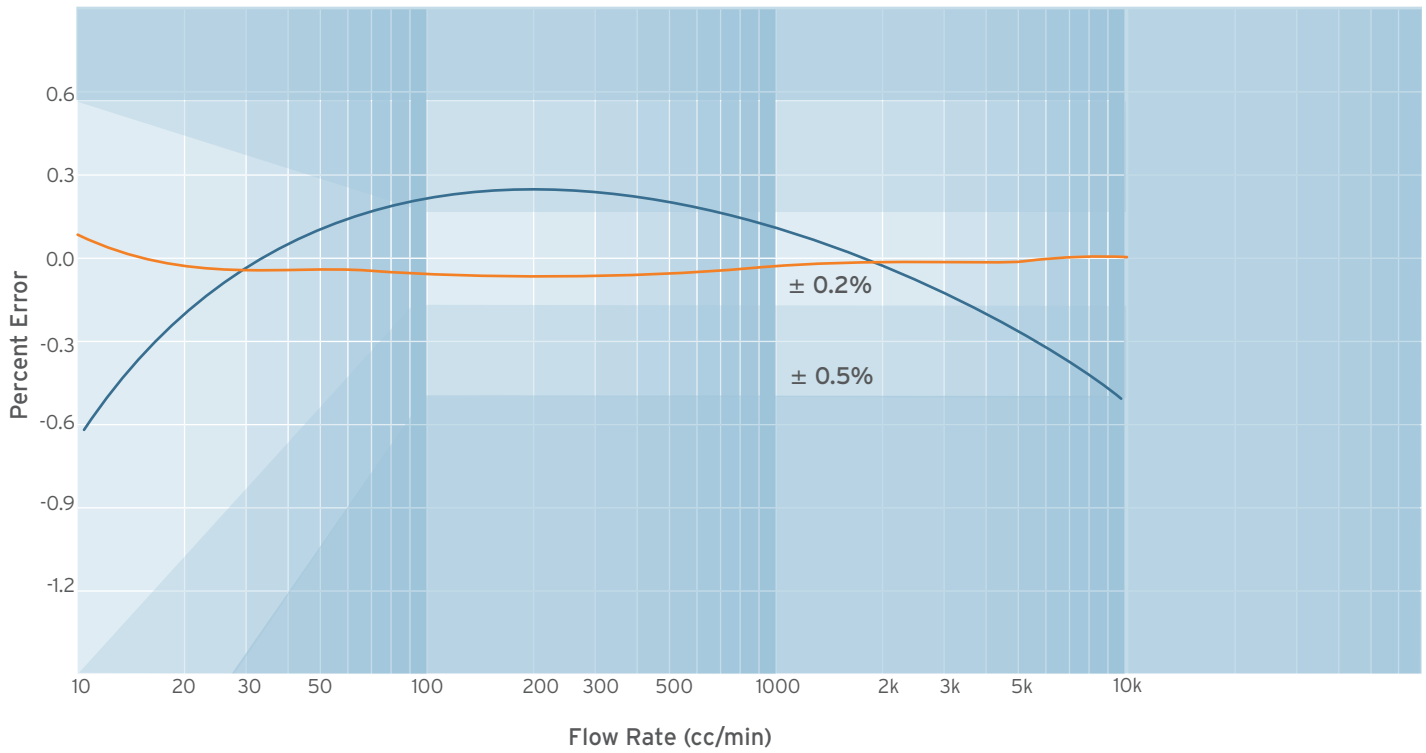
Body	Stainless steel, type 303
Pistons	Nitride hardened stainless steel, type 303
Crankshaft	Stainless steel
Bearings	All ball bearings, 440C stainless steel
O Rings	Viton®- standard • Teflon®, Perfluoro elastomer

DIMENSIONS



Model 214 Flow Meter

ACCURACY ■ LINEARIZED ■ NON LINEARIZED



TYPICAL PRESSURE DROP (Delta P versus Flow rate for various viscosities)

