

Model 213 Piston Flow Meter 1 to 1800 cc/min

SPECIFICATIONS

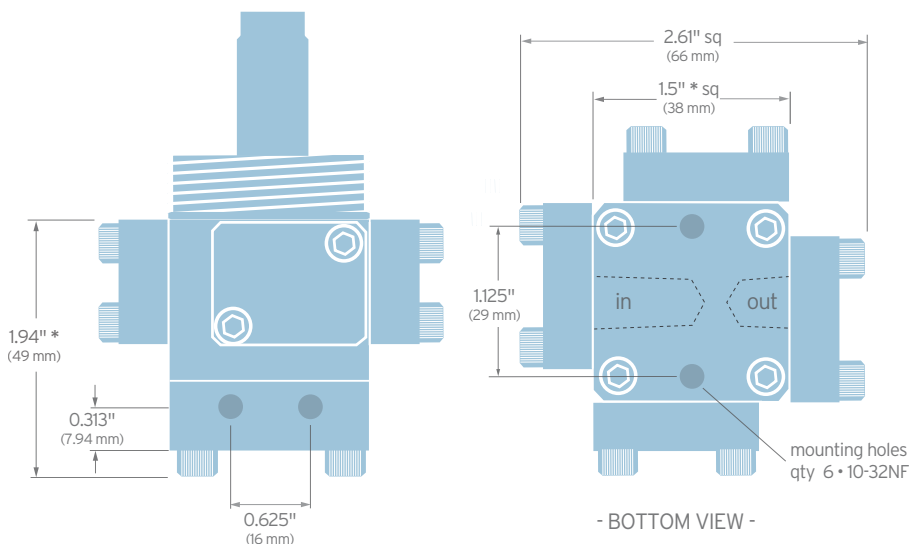
Flow Range (at 2 cP)	1 to 1800 cc/min.
Maximum Operating Pressure	70 bar or 210 bar (1000 or 3000 psi)
Displacement	0.89 cc/rev
Weight	0.6 kg
Recommended Filtration	10 micron
Port Size(s)	1/8" NPT, #4 SAE or manifold mount
Accuracy	± 0.2% of reading with a linearized transmitter ± 0.5% of reading with a non-linearized transmitter
Fluids	Most non aqueous, organic liquids



MATERIALS OF CONSTRUCTION

Body	Stainless steel, type 303
Pistons	Nitride hardened stainless steel, type 303
Crankshaft	Stainless steel
Bearings	All ball bearings, 440C stainless steel
O Rings	Viton®- standard • Teflon®, Perfluoro elastomer

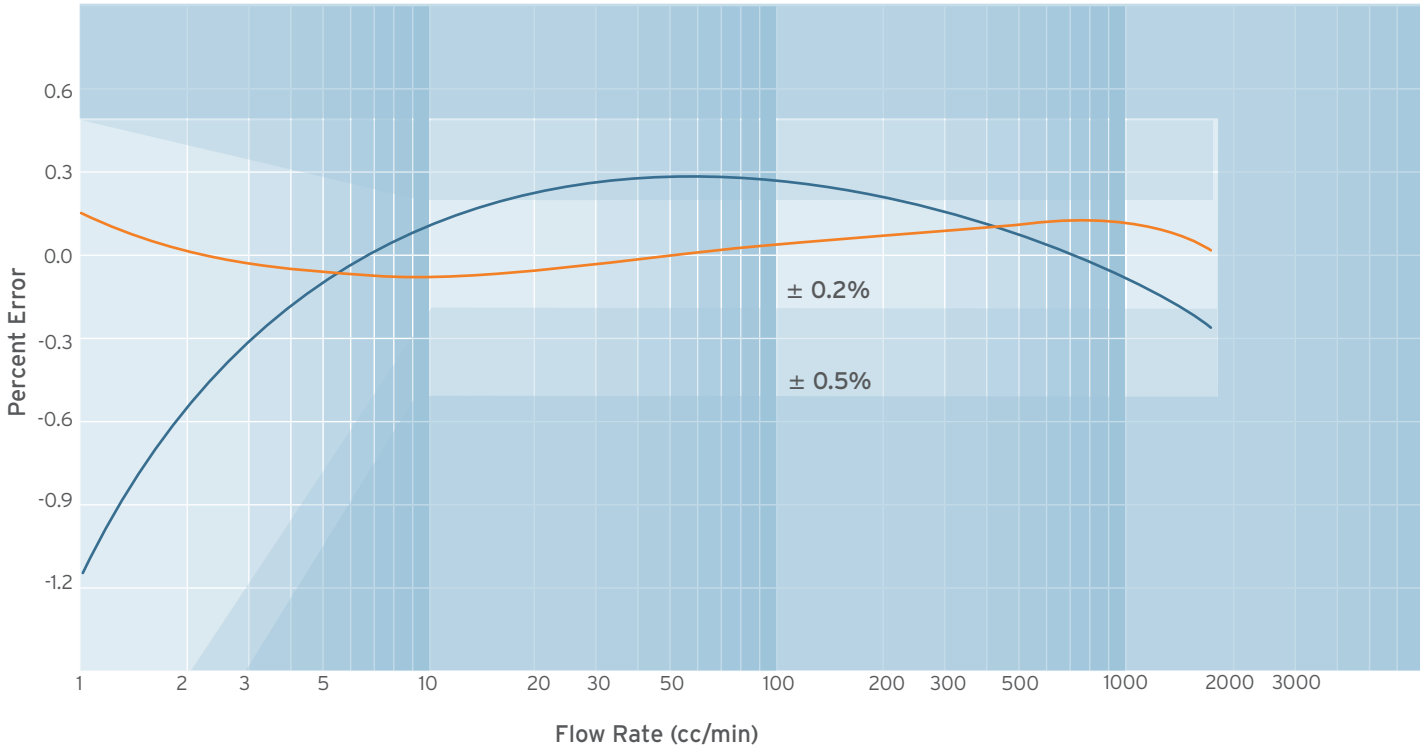
DIMENSIONS



* SAE base adds 0.375" (10mm) to height and 0.5" to face to face dimensions

Model 213 Flow Meter

ACCURACY ■ LINEARIZED ■ NON LINEARIZED



TYPICAL PRESSURE DROP (Delta P versus Flow rate for various viscosities)

